

ShearTEST Lever Loading Direct/Residual Shearbox

Related Standards: BS1377-7 : 1990 (Clause 4 & 5); ASTM D3080-04; AS 1289.6.2.2 : 1998; Q181C

The VJ Tech ShearTEST is a microprocessor controlled apparatus which shears a sample under applied normal load along a predefined plane until it is stressed to failure.

The apparatus is supplied complete with a lever loading device, hanger and shearbox carriage all mounted on a floor standing frame.

Features

- Microprocessor controlled
- Large LED graphics display
- Fully variable speed from 0.00001 to 10mm/min
- Fast Forward and Reverse speed of 10mm/min
- Accepts sample sizes from 60mm to 100mm
- Samples may be square or circular
- Floor mounted for stability
- RS232 port for computer control

Horizontal load can be measured with a standard load ring fitted with a mechanical or digital dial gauge. Alternatively an external S-beam load cell may be used in place of the load ring and dial gauge.

Vertical load is applied by placing slotted weights onto the hanger (up to 100 kg).

Horizontal and vertical movement can be measured with a mechanical dial gauge, digital dial gauge or linear displacement LSCT transducer.

Ordering Information

VJT2760 ShearTEST Direct/Residual Shearbox apparatus

VJT2760A ShearTEST Advanced Direct/Residual Shearbox apparatus with inbuilt 4 channel Data Logger

Software

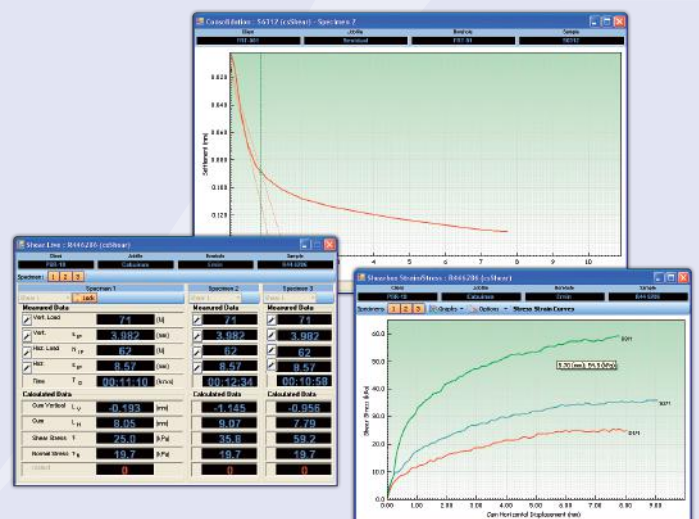
VJT-csShear Windows based logger management and Shearbox data processing software to BS1377:1990 Standard



ShearTEST Advanced Testing System

VJT-csSHEAR - Clisp Studio Direct/Residual Shear Software:

- Data logging
- Consolidation
- Direct/Residual Shear tests
- Multi specimen tests
- Automatic vertical loading (subject to hardware)
- Automatic start/stop of test/machine
- Live Tabular display of logged and calculated data
- Live Graphical display of logged and calculated data
- User defined views / graphs / tables
- Standard predefined presentation reports
- Export of data to Excel or script export & import



ShearTEST Lever Loading Direct/Residual Shearbox

Specifications

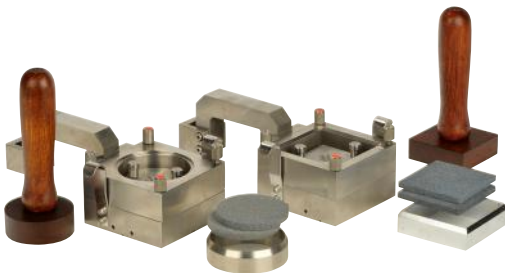
Horizontal Travel	20 mm
Speed Range: Standard Fast Forward/Reverse	0.00001 to 10 mm/min 10 mm/min
Vertical Load	10 kN
Horizontal Shear Force	5 kN
Power Supply	240V 50 Hz 1ph
Dimensions (L x D x H)	940 x 420 x 1140 mm on stand
Weight	54 kg

Vertical Settlement Measurement

Part No	Specification	Bracket/Adaptor
VJT0105-M	Mechanical Dial Gauge, 12mm travel x 0.002mm divisions	Included
VJT0105-MIT	Digital Dial Gauge, range 0 - 12.7mm x 0.001mm resolution included	Included
VJT0270	Displacement LSCT Transducer, range 10mm	VJT0284

Horizontal Settlement Measurement

Part No	Specification	Bracket/Adaptor
VJT0110-M	Mechanical Dial Gauge, 25mm travel x 0.01mm divisions	Included
VJT0110-MIT	Digital Dial Gauge, range 0 - 25.4mm x 0.001mm resolution	Included
VJT0271	Displacement LSCT Transducer, range 25mm	VJT0284



Accessories

Sample Size	60 mm sq.	60 mm dia.	100 mm sq.
Shear Box assembly (including stone)	VJT2761S	VJT2761D	VJT2762S
Cutter	VJT2552.06S	VJT2552.06D	VJT2552.10S
Dolly	VJT2553.06S	VJT2553.06D	VJT2553.10S
Stone (porous plate)	VJT2554.06S	VJT2554.06D	VJT2554.10S

Sample Size	100mm dia.	2.5" sq.	2.5" dia.
Shear Box assembly (including stone)	VJT2762D	VJT2763S	VJT2763D
Cutter	VJT2552.10D	VJT2552.2.5S	VJT2552.2.5D
Dolly	VJT2553.10D	VJT2553.2.5S	VJT2553.2.5D
Stone (porous plate)	VJT2554.10D	VJT2554.2.5S	VJT2554.2.5D

Horizontal Load Measurement

Range	2 kN	2.5 kN	3 kN
Load Ring with mechanical dial gauge	VJT0202	-	VJT0203
Load Ring with digital dial gauge	VJT0202-MIT	-	VJT0203-MIT
S Beam Load Cell	-	VJTS0360	-

Range	5 kN	Bracket/Adaptor
Load Ring with mechanical dial gauge	VJT0205	N/A
Load Ring with digital dial gauge	VJT0205-MIT	N/A
S Beam Load Cell	VJTS0361	VJT2700C

Weights

VJT0727	Slotted Weight 10kg
VJT0728	Slotted Weight 5kg
VJT0729	Slotted Weight 2kg
VJT0730	Slotted Weight 1kg
VJT0650-100W	Weight Set: 9 x 10kg, 1 x 5kg, 2 x 2kg, 1 x 1kg
VJT0650-50W	Weight Set: 4 x 10kg, 1 x 5kg, 2 x 2kg, 1 x 1kg